

BANKERS ORDER

Please complete in BLOCK CAPITALS

THE MANAGER

BANK/BUILDING SOCIETY

ADDRESS

.....

.....

TOWN

COUNTY

POSTCODE.....

Please pay to:

Severn Rivers Trust
(Account No. 0477704 - Sort Code 30-99-83)
Lloyds TSB, Queens St, Wolverhampton,
West Midlands WV1 1TF

Until such time that I/we give notice in writing to cancel this instruction

THE SUM OF (Use figures).....

THE SUM OF (Use words).....

MONTHLY QUARTERLY ANNUALLY

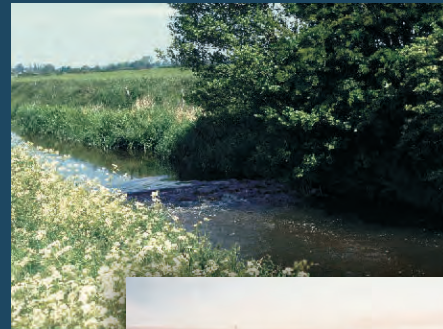
PLEASE INSERT START DATE...../...../.....

ACCOUNT NAME

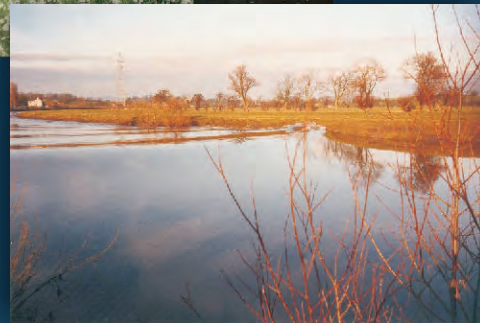
ACCOUNT NUMBER.....

SORT CODE

SIGNATURE



Buffer strip on the river Tern



The world famous Severn Bore



Track over tributary Before (above) and after



Invasive Japanese Knotweed at Ironbridge Gorge

severn
Rivers Trust

Protecting threatened species
Protecting endangered habitats
Campaigning for cleaner rivers
Educating as many people as possible



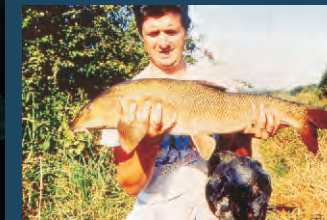
Flylife monitoring course



Fencing and coppicing on the river Redlake



Caragofa fish pass



Severn Barbel

Severn Rivers Trust, Lydbrook Cottage, 4 Dunthrop Road,
Heythrop, Chipping Norton, Oxfordshire OX7 5TL

Tel: 07817 622919

E-mail: srt@severnriverstrust.org.uk

www.severnriverstrust.org.uk

Company registration number: 6642409

severn
Rivers Trust

Preserving and Caring
for the Severn Catchment



The River Severn is the longest river in Great Britain at 354 kilometres long from it's welsh source to its outflow in the Bristol Channel. It's catchment (the area which naturally drains into a river) covers 11,420 square kilometres (4,410 square miles).

The source of the River Severn is on the north eastern slopes of Beyn Cras, one of the peaks of Pumlumon Fawr (Plynlimon), 25 kilometres from Aberystwyth on the west coast of Wales and 3 kilometres from the source of the River Wye and is 610 metres above sea level. Principal tributaries are the Vyrnwy, Tern, Worcestershire Stour, Teme, Warwickshire Avon, Leadon, Frome, Salwarpe and Worfe.

The River Severn is a vital source of water supplies for the towns and cities of Wolverhampton, Dudley, Telford, Shrewsbury, Rugby, Worcester, Coventry, Cheltenham, Gloucester, Kidderminster and Stroud.

The Severn estuary lies at the mouth of five major rivers, obviously the Severn itself, plus the Wye, Usk, Avon and Parrett. It is one of the most important British estuaries with the largest tidal range in Europe and the second highest in the world, (exceeding 15 metres at Avonmouth during spring tides),

The funnel shape of the estuary produces the famous Severn Bore as the incoming tide surges upstream. The Severn bore is a famous tidal wave which occurs in the lower reaches of the River Severn during rising tides. The average speed of the Bore is 16kms per hour and it may reach 2 metres in height.

The Severn Rivers Trust is an independent environmental organisation established to secure the preservation, protection, development and improvement of the rivers, streams, watercourses and water bodies in the Severn catchment, and to advance the education of the public in the management of water and the wider environment.

We know that streams and rivers are intimately connected to the landscapes they drain and the valleys through which they flow; a river in poor condition normally reflects a catchment in poor condition. Most problems can be addressed and most can be fixed in a manner that benefits all.

The Trust's vision is to have living, working landscapes that deliver employment, food and amenity without impacting on rivers and biodiversity, and without the need for heavy regulation and supervision. To achieve this we will work on several levels:

Through education we oppose policies that produce detrimental land management and development. We work to educate the public about their role in improving and protecting water resources. We actively promote policies and activities that benefit the whole environment and often save money as well!

On a practical level we get out 'in the field' to protect and restore rivers and waterways that have already suffered damage or are threatened. Our approach is generally to do many small things on a very large scale in places that really count. These are often not public places with good access, but small streams at the back of beyond. These streams are, however, the collection points for ground water from miles around and the source of our summer flows, the location of our salmonid spawning habitat and a network of uninterrupted migratory corridors for wildlife.

If you share our passion for water and rivers, and you would like to support our work to secure sustainable practices and economic and ecological benefit throughout the Severn catchment you can become a member of The Severn Rivers Trust, or contribute to our work by using the form on this leaflet.

You can do so in the knowledge that your contribution will be spent only on projects that are important to conservation, and you can be sure that administration and overheads are kept at an absolute minimum.



The source of the Severn

Native Crayfish

Salmon negotiating Ashford weir on the river Teme

Fish pass at Stokesay



Membership application

- SRT Individual member - £24 a year
- SRT Associate member - £50 a year (for groups and clubs etc.)
- We/I would like to make a donation of

Please complete in **BLOCK CAPITALS**

ORGANISATION NAME (if applicable)

SURNAME

HONOURS/DEGREES

FIRST NAME

TITLE

DATE OF BIRTH

OCCUPATION

ADDRESS

TOWN

COUNTY

POSTCODE

TELEPHONE

EMAIL

PAYMENT METHOD Cheque Bankers Order (see over)

SIGNATURE

The above information will remain confidential according to the rules of the Data Protection Act

Please return your completed application form to:

Severn Rivers Trust, Lydbrook Cottage, 4 Dunthorp Road, Heythrop, Chipping Norton, Oxfordshire OX7 5TL

Tel: 07817 622919

E-mail: srt@severnrivertrust.org.uk

www.severnrivertrust.org.uk

Company registration number: 6642409